



Formative Assessment: I

Subject: Science

Date: 29.08.2024

Student's Name: _____ Roll No: _____ Grade: 6

Marks: 25

Time Duration: 60 minutes

Invigilator's Sign.

Q.1. This question is about human diseases. Look at the table that shows information about some human diseases.

Diseases	Cause of infection	How infection enters the body
Cholera	Bacteria	Unsafe water and food
Malaria	Parasite	Insect bite
Dengue	Virus	Insect bite
Tetanus	Bacteria	Through cuts in the skin
Yellow Fever	Virus	Insect bite

- a. Write down one disease from the table that can be controlled by using good hygiene. **(1)**

- b. Write any Two ways to reduce infection with Malaria. **(2)**

1. _____

2. _____

Q.2. Boiling and Evaporation of water are both physical changes that are reversible.

- a. What is the change of state when water boils? **(1)**

_____ to _____

- b. Arun is studying differences between boiling and evaporation. He observed that the change of state in both the process is from liquid to gas. Can you help him point out the difference in two processes? **(2)**

1. _____

2. _____

Q.3. Blessy has 2 substances: A colourless liquid called vinegar. A white solid called baking soda. Blessy adds vinegar to some baking soda. A chemical reaction takes place. Carbon di oxide gas and liquid water are made. A solution of Sodium acetate is also made.

- a. Complete the table to name the reactants and products in this chemical reaction. **(2)**

Name of Reactant	Name of Product

One way that Blessy knows a chemical reaction happens is because she sees a gas is made.

- b. Describe **one** observation Blessy makes that shows a gas is made. **(1)**

Q.4. Physical changes take place during puberty in humans.

- a. State one physical change that takes place only in females. **(1)**

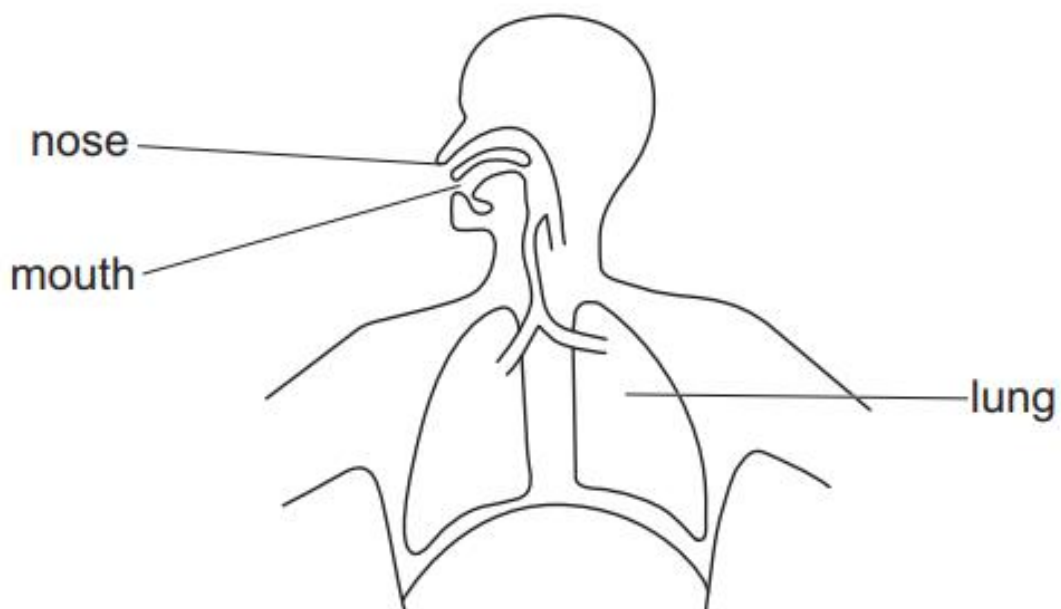
- b. State one physical change that takes place only in males. **(1)**

- c. State one physical change that takes place both in males and females. **(1)**

Q.5. Mike dissolves 5.0 g of salt in 100 ml of water.

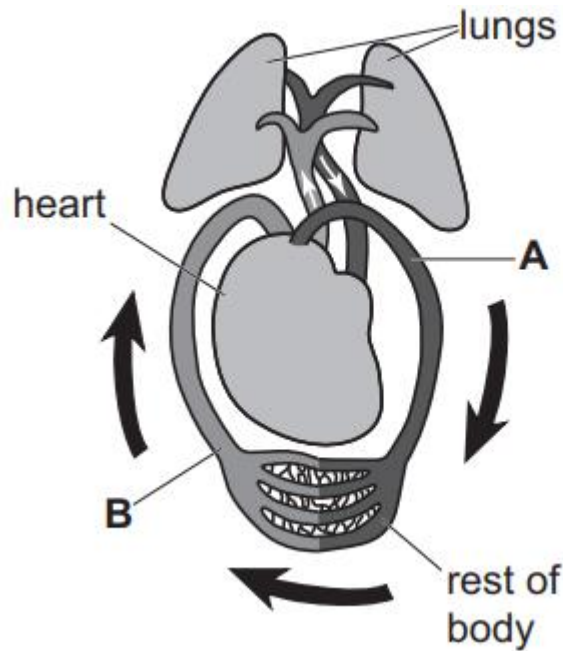
- a. Write down the piece of equipment Mike uses to measure 5.0 g of salt. (1)
-
- b. Write down the piece of equipment Mike uses to accurately measure 100 ml of water. (1)
-
- c. Salt dissolves in water to make a mixture. The salt is the solute. What is the name given to the water in the mixture? (1)
-
- d. What is the name given to a mixture of a solid dissolved in water? (1)
-

Q.6. The diagram shows the respiratory system inside a human body. There is oxygen in the air outside the body.



- a. Show the direction how oxygen travels from the air to the blood in the body. Use the labels on the diagram in your description. (2)
-

Q.7. The diagram shows a model of the human circulatory system. The arrows show the direction of blood flow.



a. Complete the sentences. Choose from the list. (1)

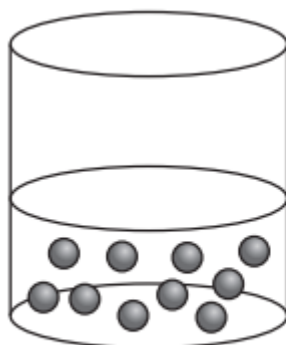
Blood vessel A is _____

Blood vessel B is _____

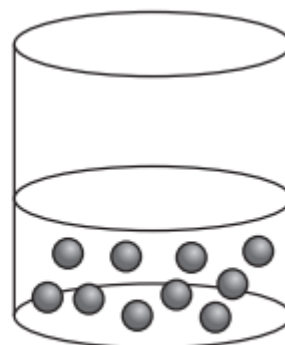
b. Blood transports oxygen and waste. Name one other thing transported by blood. (1)

Q.8. Modelling is used to show evaporation. Liquid A evaporates faster than liquid B. Circles are used to model particles. A few particles are drawn in each beaker.

a. Draw more particles on the diagram to show liquid A evaporating faster than liquid B. (1)



liquid A



liquid B

Q.9. Chen investigates the boiling point of different salt solutions. In his first experiment he:

- adds 1.0 g of salt to 100 ml of water
- stirs the mixture until the salt dissolves
- heats the salt solution until it boils
- measures the boiling point of the salt solution.

➤ Chen repeats the experiment using different masses of salt. Look at the table of his results.

Mass of salt added in g	Boiling point in °C
1.0	102
2.0	104
3.0	106
4.0	108
5.0	110

a. Plot a line graph of the results on the grid. **(2)**

b. Chen does another experiment. This time he uses 6.0 g of salt. Predict the boiling point of the salt solution. **(1)**

_____ °C

c. What is the boiling point of pure water? **(1)**

_____ °C
