



Cambridge Assessment
International Education



MOUNT CARMEL INTERNATIONAL SCHOOL, AKOLA
CAMBRIDGE PRIMARY IGCSE (TERM END Examinations-I)

Grade: 4

Subject: Science

Date: 08.11.2024

Candidate Name: _____ Roll Number: _____

Max Marks: 40

Time Duration: 90 minutes

Invigilator's Sign: _____

SCRUTINY

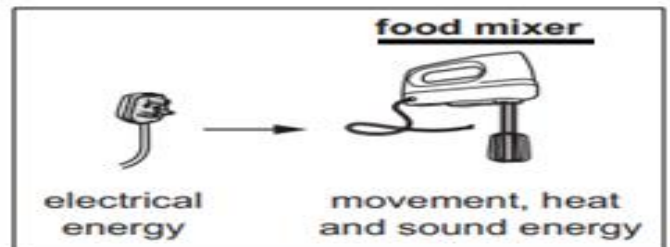
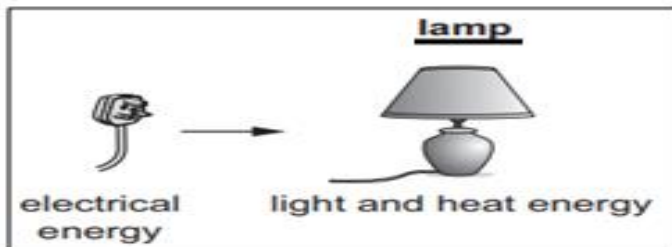
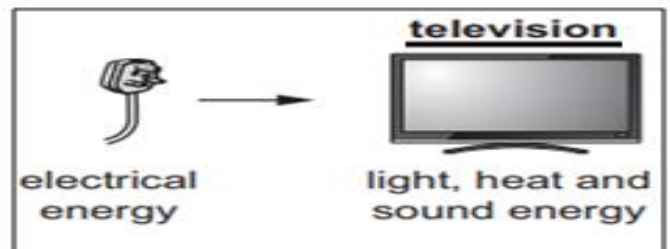
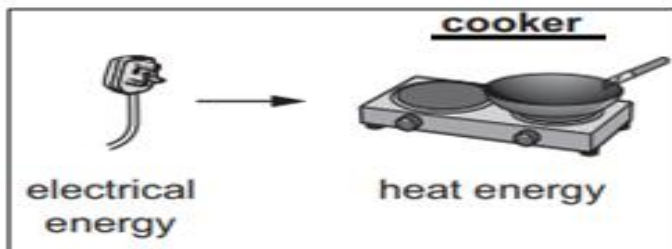
Q1	Q11	Q21	Q31	Q41	Q51
Q2	Q12	Q22	Q32	Q42	Q52
Q3	Q13	Q23	Q33	Q43	Q53
Q4	Q14	Q24	Q34	Q44	Q54
Q5	Q15	Q25	Q35	Q45	Q55
Q6	Q16	Q26	Q36	Q46	Q56
Q7	Q17	Q27	Q37	Q47	Q57
Q8	Q18	Q28	Q38	Q48	Q58
Q9	Q19	Q29	Q39	Q49	Q59
Q10	Q20	Q30	Q40	Q50	Q60

Marks Obtained

40	10	50	Grade

Sub. Tr. Sign: _____

Q.1. Objects in the home transfer electrical energy into other types of energy. Look at the pictures.



a. Which one type of energy transfer seen common in all pictures? (1)

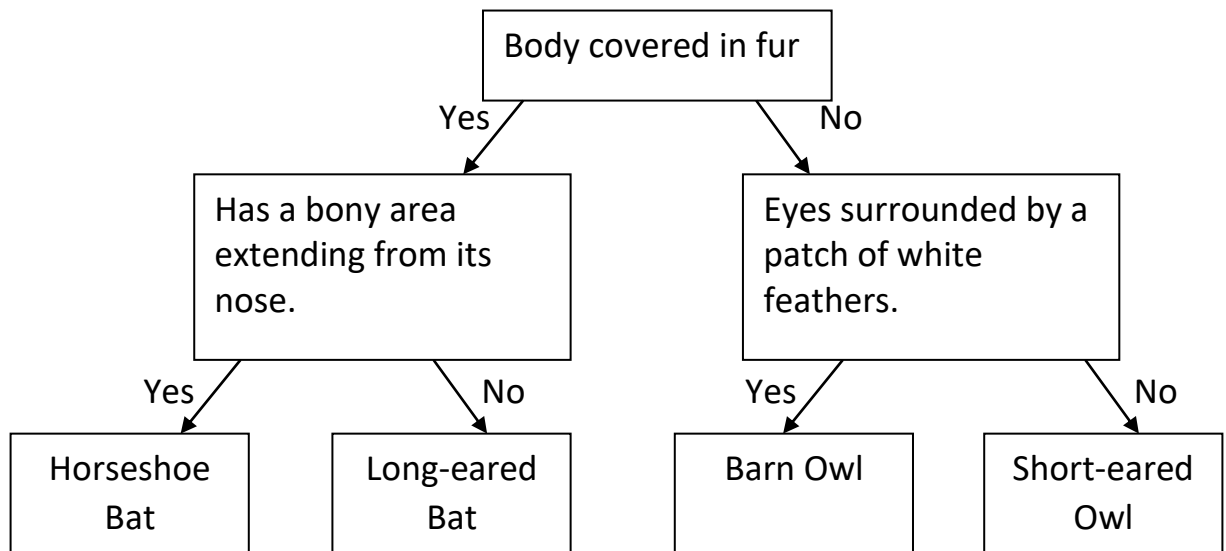
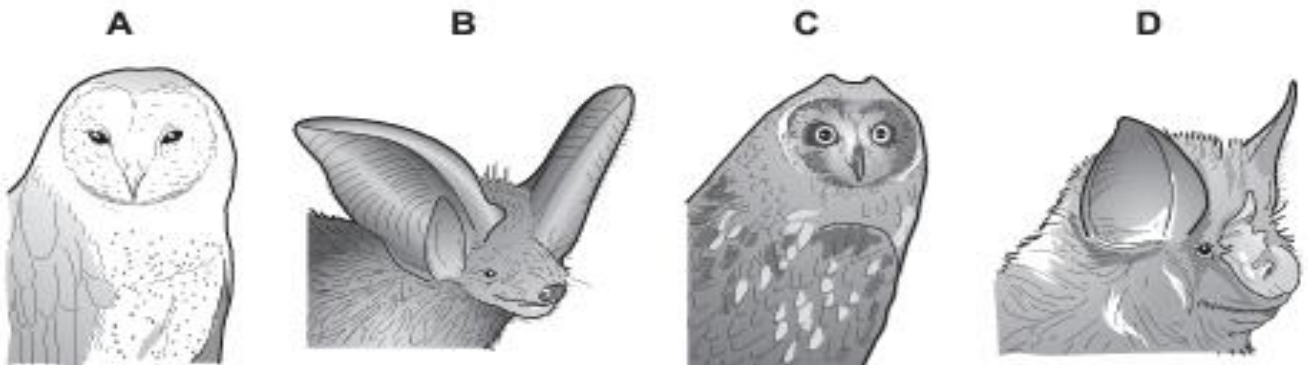
b. Name the energy transfer taking place in food mixer? (1)

c. Write down the name of two objects not in the pictures that transfers electrical energy to sound energy. (2)

d. Write the law of energy transfer. (2)

e. Which type of energy is transferred to the surrounding when an object cools down? (1)

Q.2. The drawings show four animals that fly at night. (4)



Animal A is _____

Animal B is _____

Animal C is _____

Animal D is _____

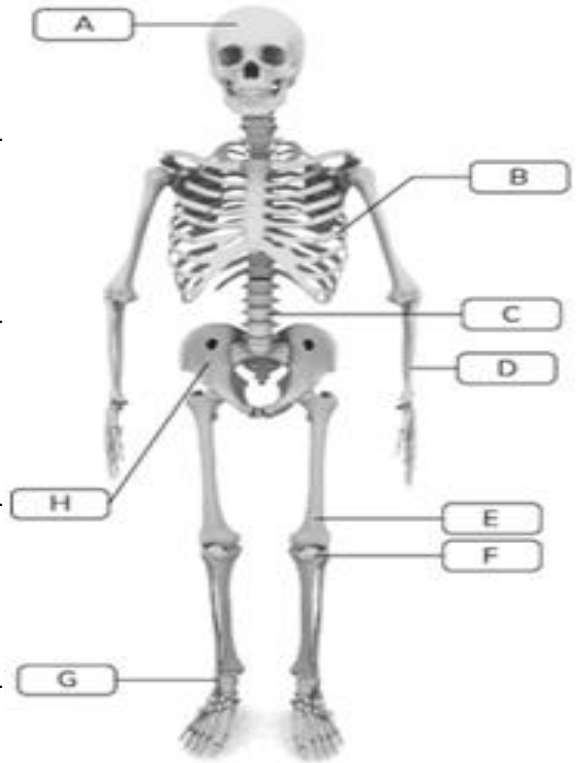
Q.3. Look at the picture of the skeleton and answer the questions. (Write alphabets) (4)

a. Write the function of letter C?

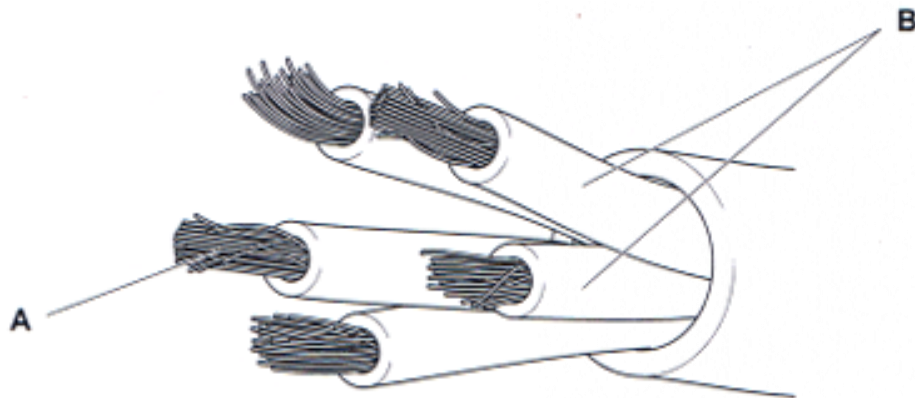
b. Label the part A?

c. Which letter represents the rib cage?

d. Which part is the hip bone?



Q.4. Electrical cables contain wires.



a. What material might part A be made of, and why? (2)

b. What material is used to make the parts labelled B and why? (2)

Q.5. This Tower has a metal framework to give it shape and support.



a. What is the name of the Framework that gives humans shape and support? **(1)**

b. What material makes the human framework strong? **(1)**

c. In humans, the framework has joints to let us move about. What do muscles do to make humans move? Tick (✓) **one** box. **(1)**

attract

contract

pump

sense

Q.6. Henry put a small bit of petroleum jelly on the handle of the teaspoon. He pushed the pearl into the petroleum jelly on the spoon. Daniel poured hot water into a beaker. Henry put the spoon in the beaker containing hot water.

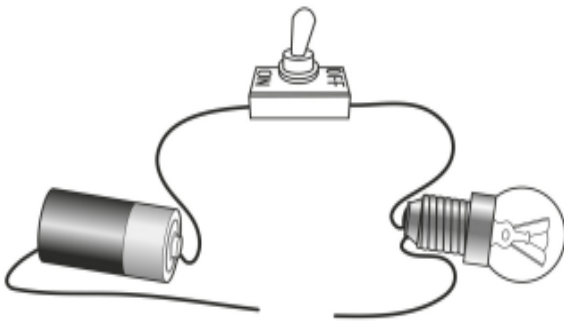
a. What will happen to the pearl? Why does this happen? **(2)**

b. Draw an energy chain for the energy transfers that took place. **(2)**

c. Suggest a question that you have investigated in above experiment. (2)

d. Use your question to write a conclusion. (2)

Q.7. Yousef makes an electrical circuit. The lamp does not work. Why? Tick (✓) the two correct answers. (2)



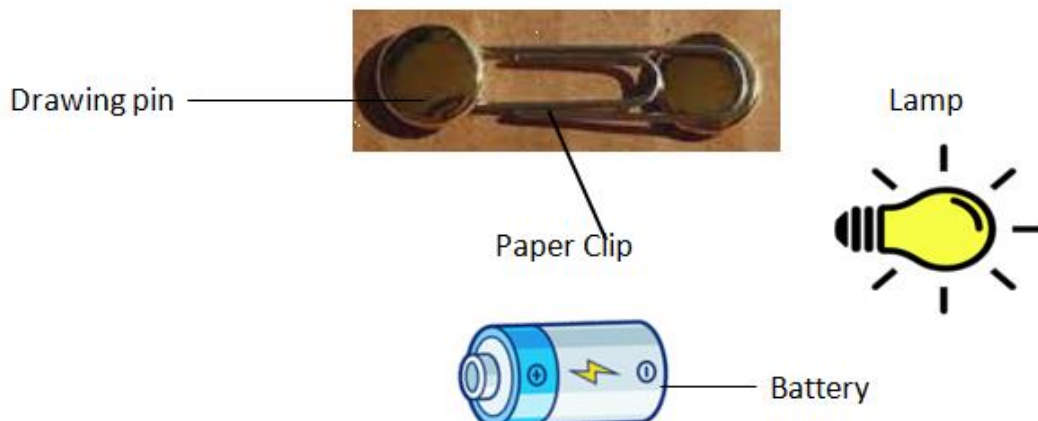
- The circuit is not complete.
- There is no cell in the circuit.
- There is no motor in the circuit.
- The switch is on.
- The switch is off.

Q.8. Sinu makes electric circuits.

a. Draw wires to join the lamp and cell to make a complete circuit. (1)



b. Draw wires to join the lamp, cell and switch to make a complete circuit. (2)



c. Why Sinu used metal paper clip to make the switch? **(1)**

d. Why Sinu used metal drawing pins to make the switch? **(1)**

e. What must Sinu do with the switch to break the circuit? **(1)**

f. If you added a second lamp to the circuit would the lamp glow more brightly or more dimly. Explain your answer. **(2)**
