

**MOUNT CARMEL INTERNATIONAL SCHOOL, AKOLA**



**Cambridge International**

Formative Assessment: I

Subject: Mathematics

Date: 02.09.2024

Student's Name: \_\_\_\_\_ Roll No. \_\_\_\_\_ Grade: 8

Marks: 40

Time Duration: 90 minutes

Invigilator's Sign.

**1. Classify the following as natural numbers, integers, rational numbers or irrational numbers. Use a venn diagram for the classification. (2)**

$-3.5, 0.6, 7, 0, \sqrt{25}, \sqrt[3]{25}, \sqrt{8}, \sqrt[3]{8}$

**2. Give an example of. (2)**

a. One rational number and one irrational number such that their product is rational.

\_\_\_\_\_

b. One rational number and one irrational number such that their product is irrational.

\_\_\_\_\_

3. Is it possible to find a circle with its circumference and diameter that are both rational numbers? Explain. (2)

---

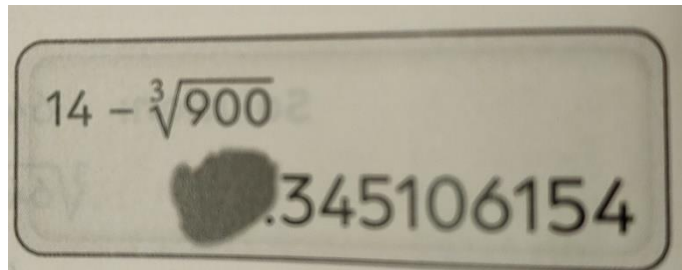
---

4. Between which two consecutive integers do the following lie? (1)

$$12 - \sqrt{170}$$

---

5. Bill is asked to use a calculator to find the value of  $14 - \sqrt[3]{900}$  (2)



What does the smudge stand for?

Without using a calculator, explain how you arrived at the answers.

---

---

---

---

---

6. Evaluate the following. Write the answer in the simplest form.

a.  $7^2 \div 7^3 + 3^4 \times 3^7 \div 3^{12}$  (2)

---

---

b.  $168.4 \div 10^{-4}$  (1)

---

---

7. a. Express the number **0.00398** in standard form.

**(1)**

---

b. A cell has a diameter of 3 micrometers. What is its diameter in metres? Write your answer in standard form.

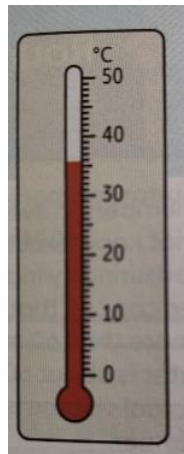
**(1)**

---

---

8. The temperature in a room is  $36^{\circ}\text{C}$  rounded to the nearest degree Celsius. What is the range of the actual temperature of the room?

**(2)**



---

---

9. During a sale, an electrical appliance shop offers a 20% reduction on all its item prices. After the sale, the owner of the shop increases the prices of all items by 20% of the reduced prices. What is the net percentage increase or decrease in item prices?

**(2)**

---

---

---

---

10. a. Evaluate  $4(x+1)^2 - 1/5(x+2)^2$  when  $x=3$ . (2)

---

---

---

b. Evaluate and give your answer correct to 2 decimal places. (3)

$$2.6 - 3 \times (1/2 + 1.5) \div 0.01$$

---

---

---

11. In a rectangle, the length is 3 cm longer than its width.

a. The width of the rectangle is  $x$  cm. Write an expression for the area of the rectangle. (1)

---

---

b. Find the area of the rectangle if  $x=5$ . (1)

---

---

---

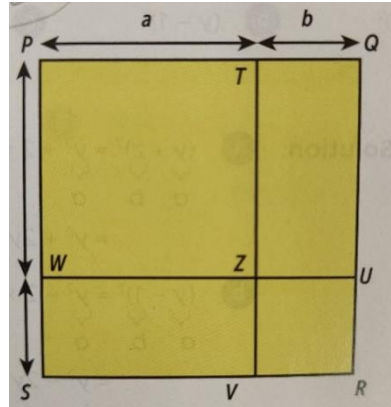
12. Expand and simplify. (2)

$$(2x+1)(x-2)$$

---

---

13. Consider the expansion of  $(a+b)^2$



a. Explain why the area of rectangle PQRS equals  $(a+b)^2$  (2)

---

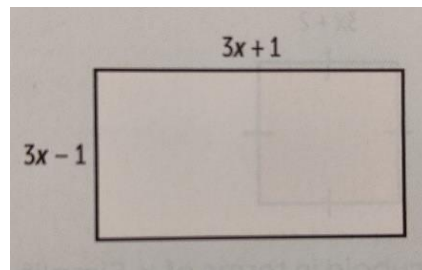
---

---

b. Find the sum of the areas of the rectangles TQZU, WZVS, PTZW and ZURV. (1)

---

14. Write an expression to represent the area of the rectangle as shown. Simplify your answer. (1)



---

---

15. Simplify the following. (1)

$$\frac{4x}{12} (x - 5)$$

---

---

---

16. The total surface area,  $A$ , of a cube is given by the formula  $A = 6l^2$  where  $l$  is the length of the cube. Make  $l$  the subject of the formula. (2)

---

---

17. Find the area covered by the minute hand when it sweeps one round of the watch. Give your answer correct to 3 significant figures. (2)



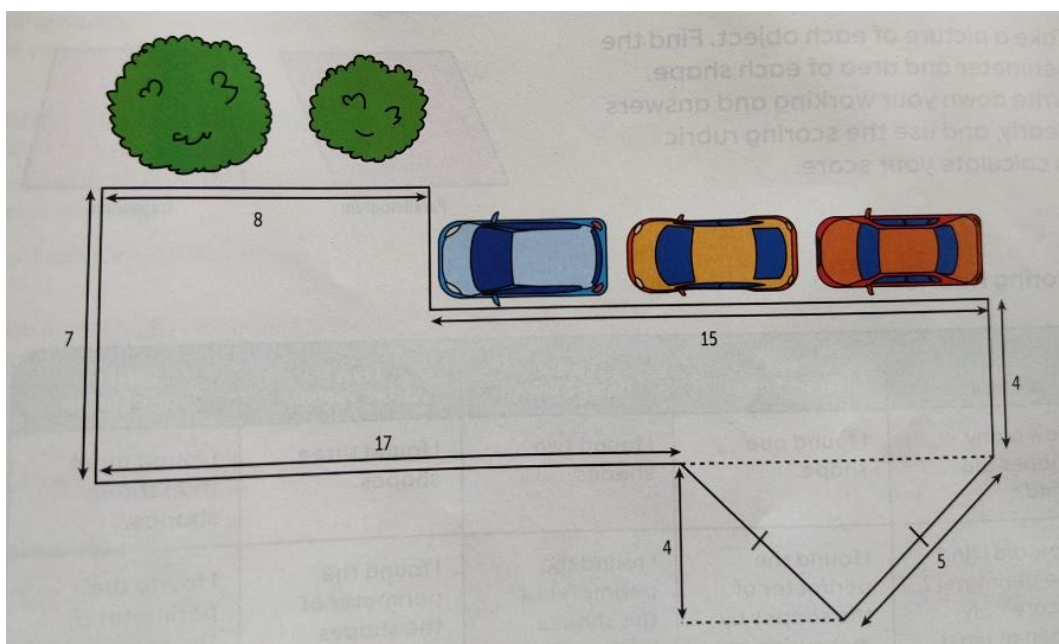
---

---

---

---

18. The diagram shows the floor plan of a school compound. All dimensions are in metres.



Calculate

**a. The area**

**(2)**

---

---

---

---

**b. Perimeter of the floor plan.**

**(2)**

---

---

---

---

\*\*\*\*\*