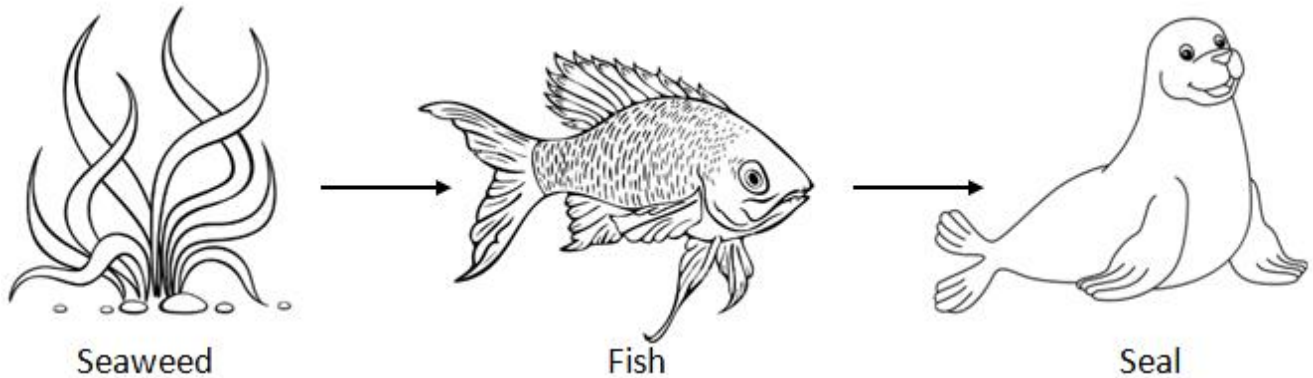




**Q.1. This is a picture of a food chain.**



- a. What is the name given to the seaweed in the food chain? (1)
- \_\_\_\_\_
- b. What other name, apart from consumer and carnivore, can be given to the 'Seal' in the food chain? (1)
- \_\_\_\_\_
- c. The producer uses energy. Where does it get its energy from? (1)
- \_\_\_\_\_
- d. In the box, construct a food chain to show the relationship between a plant, a cat, a bird and a caterpillar. (2)

**Q.2. Circle the correct word to complete the statement.**

**(1)**

a. Pulling is an example of a \_\_\_\_\_

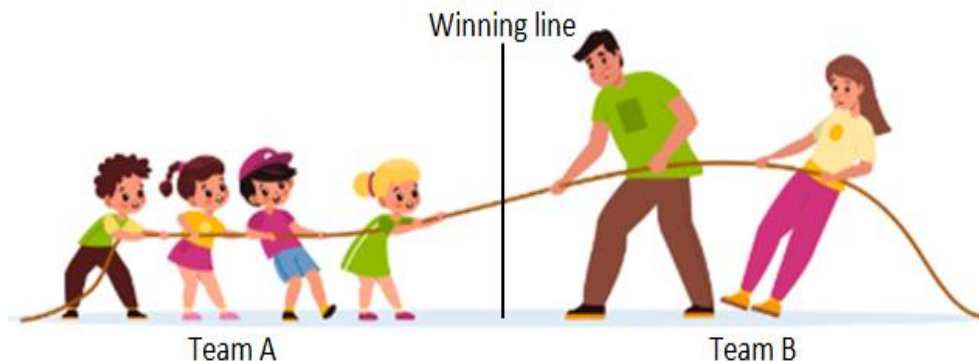
Mass

Force

Speed

Pressure

b. The picture shows two teams having a tug-of-war.



**To win, a team has to pull the other team over the winning line. Which team is likely to win? Tick (✓) the correct box.**

**(1)**

➤ The team with four people in it

➤ The team with two people in it

➤ The team that applies the greatest force

➤ The team that applies a balanced force

c. If Team B applies a total force of 100 N and Team A applies a force of 850 N. Explain what will happen?

**(1)**

---

---

**Q.3. There are many types of medicine.**

**(3)**

Doctors give medicine to patients in different ways. Match the **type of medicine** with the **way it enters the body** and write the correct option in the space provided.

**Type of medicine**

**Way it enters the body**

a. cream

1. absorbed through the skin

b. inhaler

2. directly into the blood

c. tablet

3. inhaled into lungs

d. injection

4. swallowed and absorbed in stomach

a. \_\_\_\_\_

b. \_\_\_\_\_

c. \_\_\_\_\_

d. \_\_\_\_\_

**Q.4. Jamila and Blessy make a model arm. They use strings to control the movement of the arm. The Students of Grade four are looking at a diagram of the human arm.**



a. Blessy pulls her string. Complete the sentence. **(2)**

When Blessy pulls her string, the upper arm \_\_\_\_\_ and lower arm \_\_\_\_\_.

b. Which part of the arm does the string represent? Circle the correct answer. **(1)**

blood vessel                      bone                      joint                      muscle                      skin

**Q.4. Many medicines have been discovered in plants.**

Aspirin was discovered in the willow plant.

Aspirin is used to treat fever.

It is also used to prevent heart attack and stroke.

Not all plants can be used for medicines.

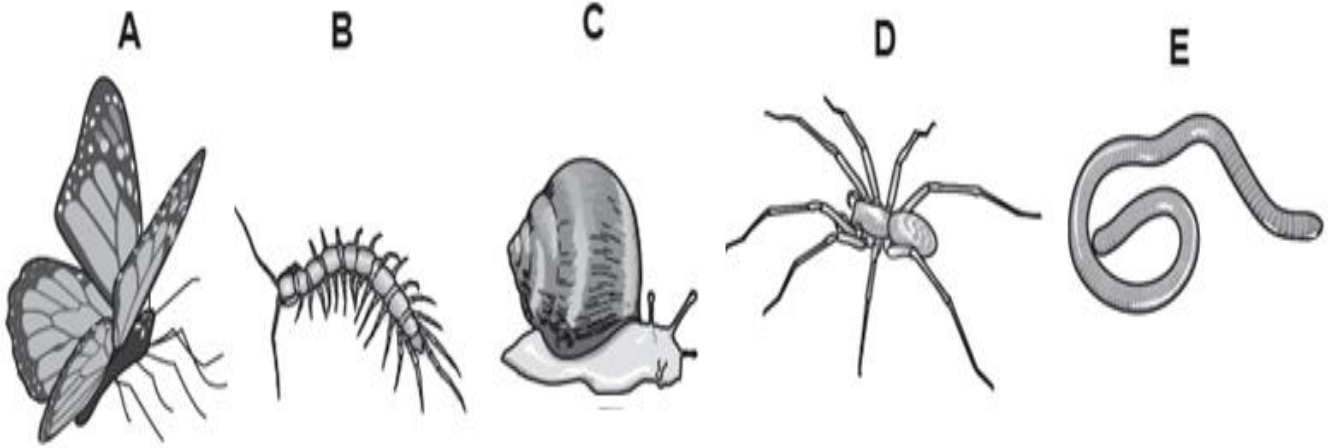


**Tick two of these statements to explain why. **(2)****

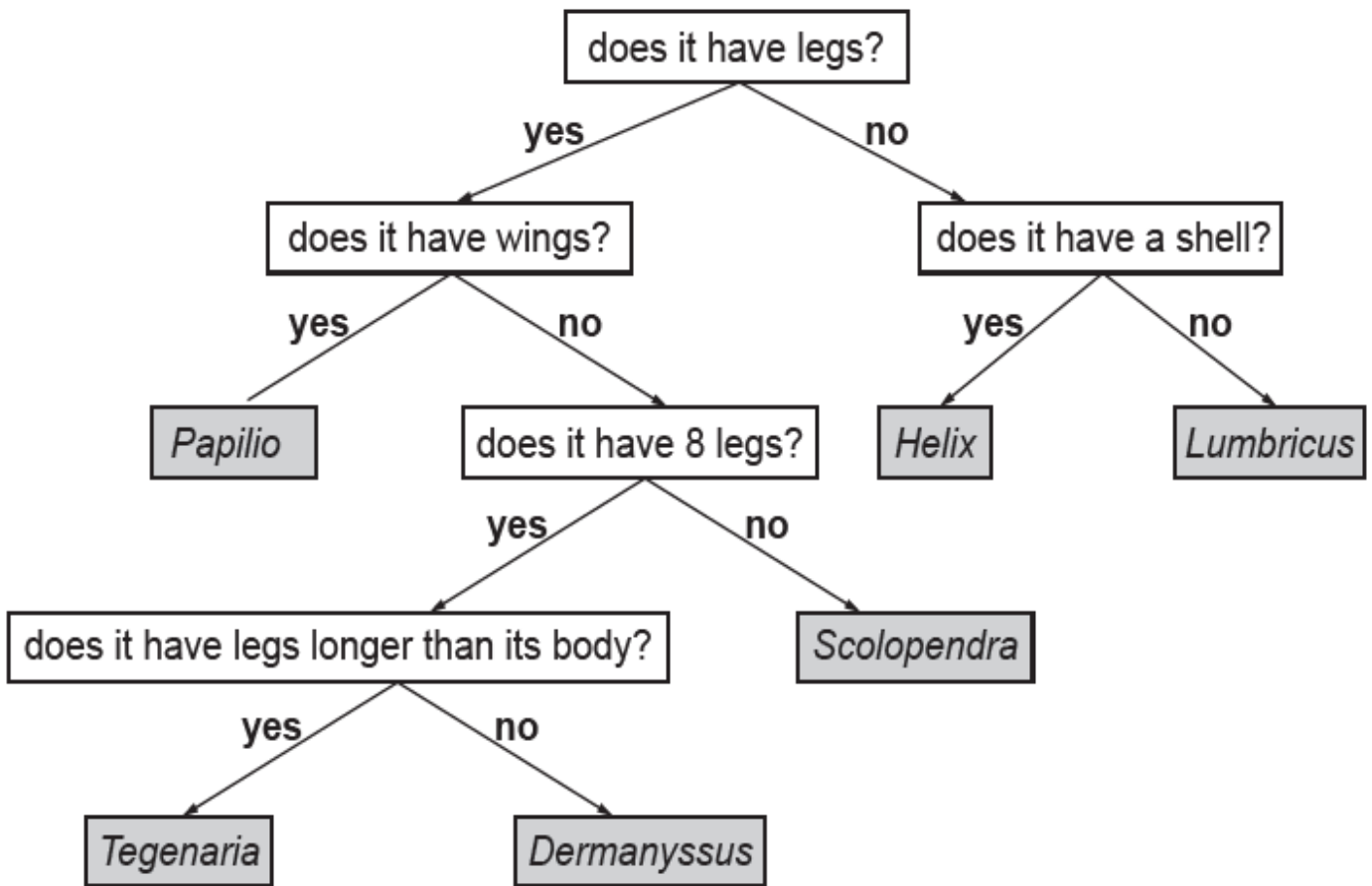
- some plants have flowers
- some plants are poisonous
- some plants are harmful
- some plants are pollinated by insects

Q.5. Mia has pictures of six different animals.

(5)



A key can be used to identify these animals.



➤ Use the key to identify the animals.

A \_\_\_\_\_

B \_\_\_\_\_

C \_\_\_\_\_

D \_\_\_\_\_

E \_\_\_\_\_

**Q.6 Anastasia is investigating the height of the children in her class.**

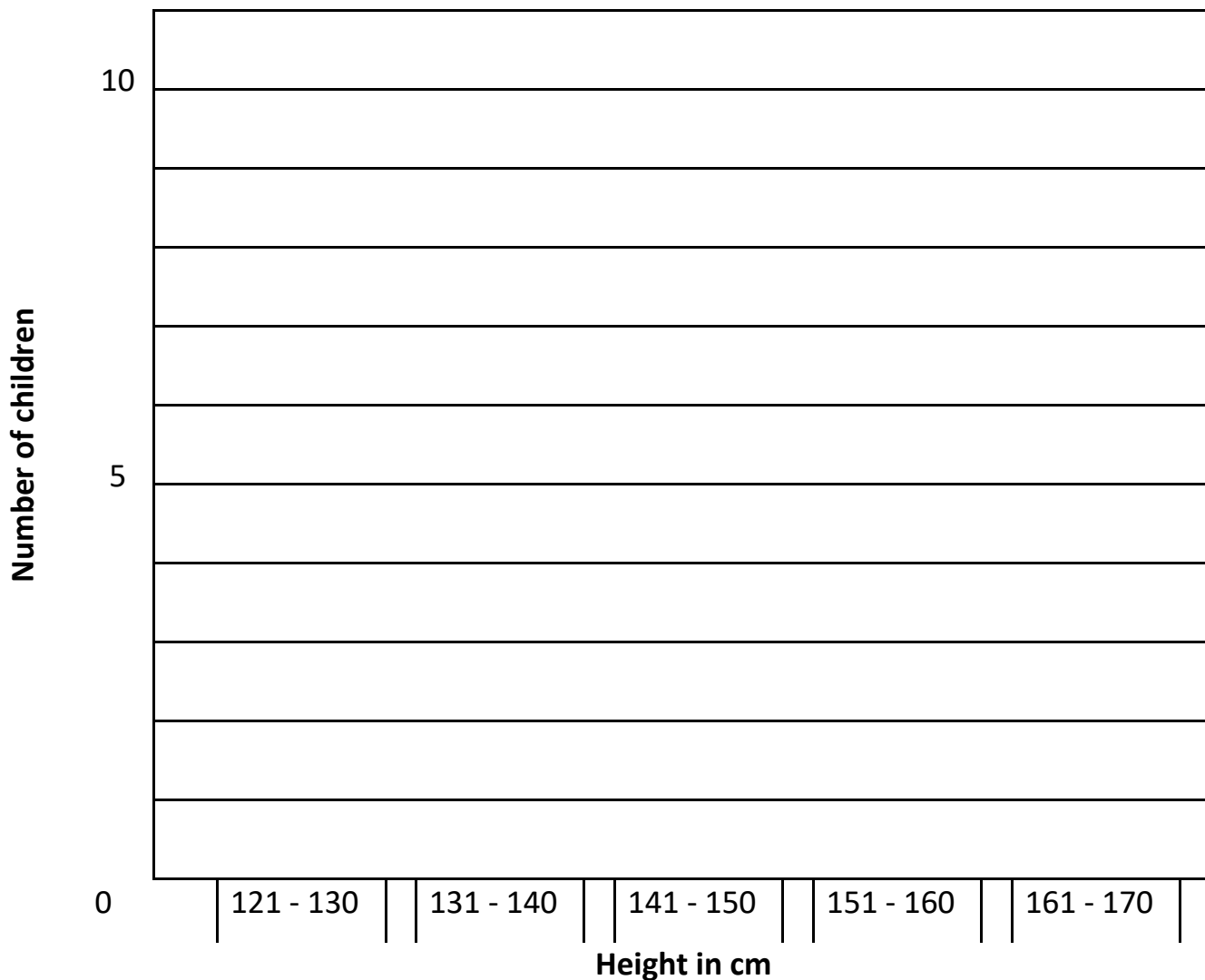
a. Name a piece of equipment she could use to measure the height of a child. **(1)**

\_\_\_\_\_

b. Here are Anastasia's results. **(3)**

Height in cm	Number of children
121 - 130	3
131 - 140	7
141 - 150	10
151 - 160	5
161 - 170	2

Complete the bar chart using Anastasia's results (use pencil to draw).



\*\*\*\*\*