



Formative Assessment: I

Subject: Science

Date: 29.08.2024

Student's Name: _____ Roll No: _____ Grade: 3

Marks: 25

Time Duration: 60 minutes

Invigilator's Sign.

Q.1. Henry was curious about what would happen if some of these vital parts were missing from the human body. Imagine a body without these parts... Write your thoughts in the clouds. (4)

Brain

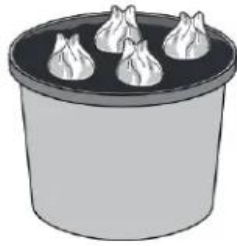
Heart

Stomach

Lungs



Q.2. Greg and Nikki investigate how plant seeds grow. They want to find out if temperature affects the growth of the seeds. They put some seeds in three parts of dry compost.



cool dark cupboard



cold dark fridge



warm classroom
in a dark box

a. They want to make a fair test. What have they forgotten to keep the same? **(1)**

b. What else should they keep the same to make it a fair test? **(1)**

c. What must they give the plant seeds at the start of their investigation? **(1)**

d. After 10 days, they look at one bulb from each part.



cool dark cupboard



cold dark fridge



warm classroom
in a dark box

Finish their conclusion. **(1)**

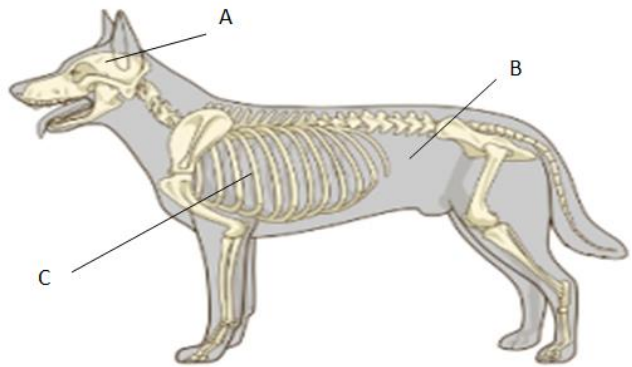
The plant seeds grew best in the _____.

This is because _____

Tick the correct answer. **(1)**

- Plants need only water to grow
- Plants grow better in the dark
- Plants grow better in warm place

Q.3. The picture shows the inside of dog. A dog has different organs.



a. Write the correct name of the organ in the space provided. (2)

Letter	Organ
A	
B	
C	

Q.4. The pictures show some living things found in a desert.



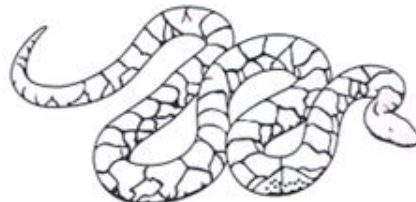
ant



plant



lizard



snake

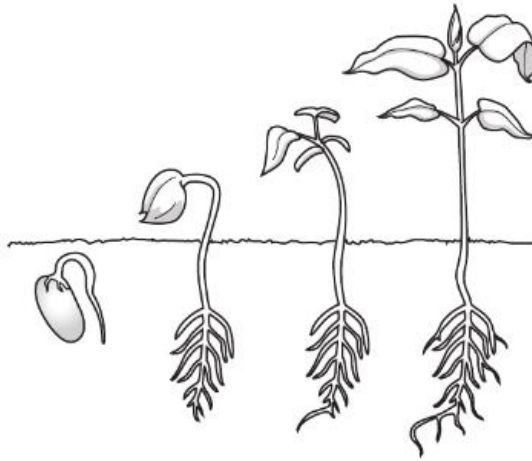
a. Draw arrows between the pictures to make a food chain. (2)

b. Name the producer in this food chain. (1)

c. The producer uses energy. Where does this energy come from? (1)

d. Name one predator in this food chain. (1)

Q.5. Look at the diagram showing a plant growing.



a. What happens to the roots when the plant grows? **(1)**

b. What two things happen to the leaves when the plant grows? **(2)**

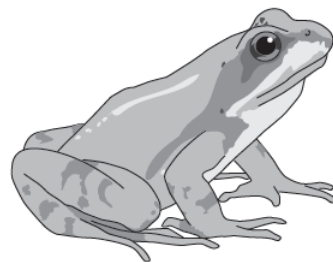
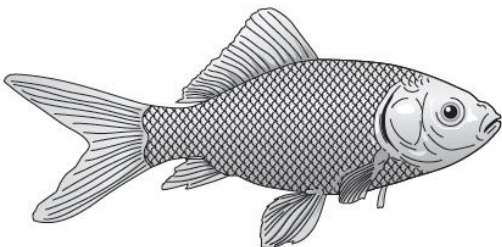
1. _____

2. _____

c. The stem grows long and straight. Why is it important for the stem to grow when the plant grows? **(1)**

Q.6. There are different types of animals.

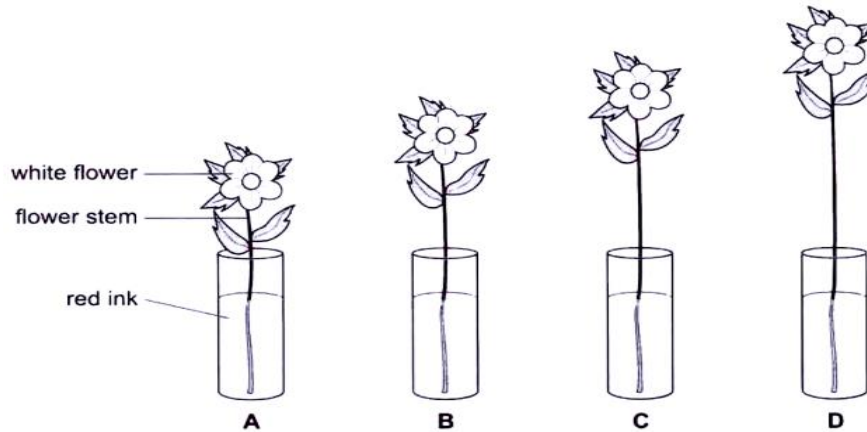
a. Mike has picture of two animals. Complete the sentence. **(2)**



a. This animal is a fish because in the picture I see it has

b. This animal is an amphibian because in the picture I see it has

Q.7. Yuri investigates water movement in flowers. He has four different length flower stems he puts them into red ink. Here are Yuri's results.



Flower	Time for flower to turn red in minutes
A	20
B	30
C	40
D	?

a. Predict the result for flower D.

It takes _____ minutes for the flower to go red. (1)

b. What happens if Yuri uses blue ink? (1)

c. Yuri carries out the investigation again. He splits the stem in half. He puts half the stem in clear water and half the stem in red ink. shade the part of the flower that turns red. (1)

