



Science

Stage 5

Paper 1

2024

Cambridge Primary Progression Test

Name

Class

Date

35 minutes

No additional materials are needed.

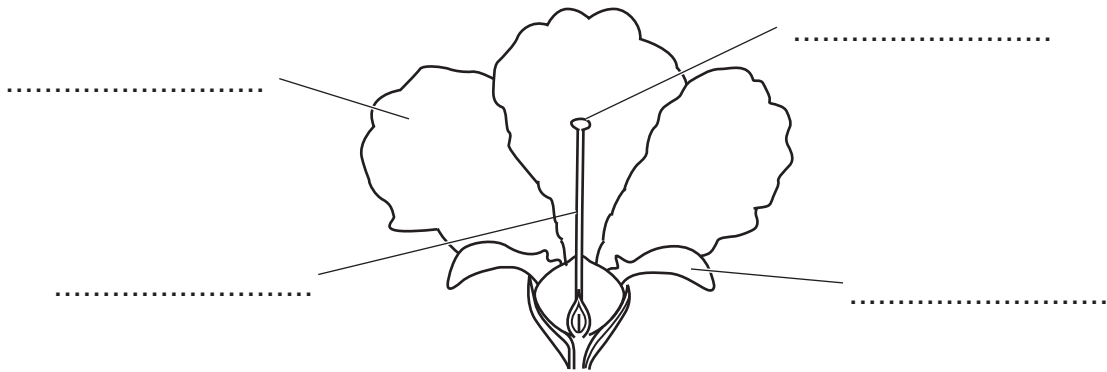
INSTRUCTIONS

- Answer **all** questions.
- Write your answer to each question in the space provided.
- You should show all your working on the question paper.

INFORMATION

- The total mark for this paper is 40.
- The number of marks for each question or part question is shown in brackets [].

1 Mike draws a diagram of a flower.



(a) Complete the **four** labels on the diagram.

Choose words from the list.

- anther** **filament** **ovary** **petal**
sepal **stigma** **style**

[2]

(b) Mike has **not** included the male parts of a flower on his diagram.

Look at the picture of the male parts of a flower.

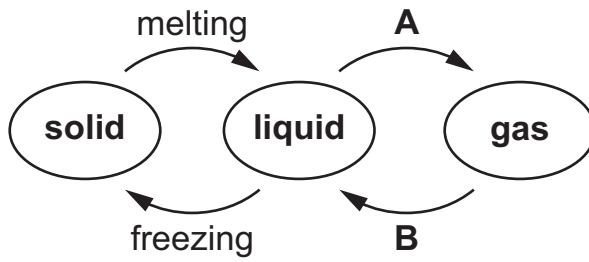


Complete the picture:

- write down the name of the part that makes pollen
- draw a label line from the name to the part that makes pollen.

[1]

2 Blessy draws a diagram that shows some processes.



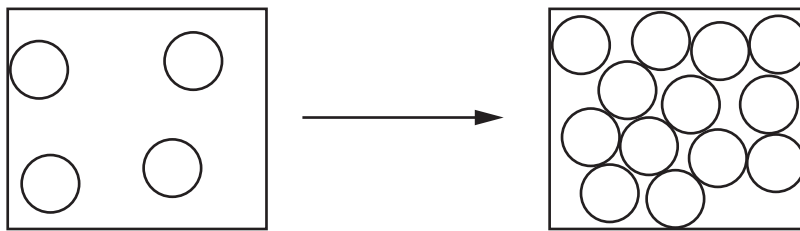
(a) Write down the name of process **A**.

..... [1]

(b) Write down the name of process **B**.

..... [1]

(c) Look at the particle model diagram for one of the processes.



Which process does the diagram show, **A** or **B**?

.....

Explain what happens to the particles during this process.

Use the diagram to help you.

.....
.....

[1]

(d) The particle model describes the arrangement and movement of particles.

Describe the arrangement and movement of particles in a **solid**.

arrangement

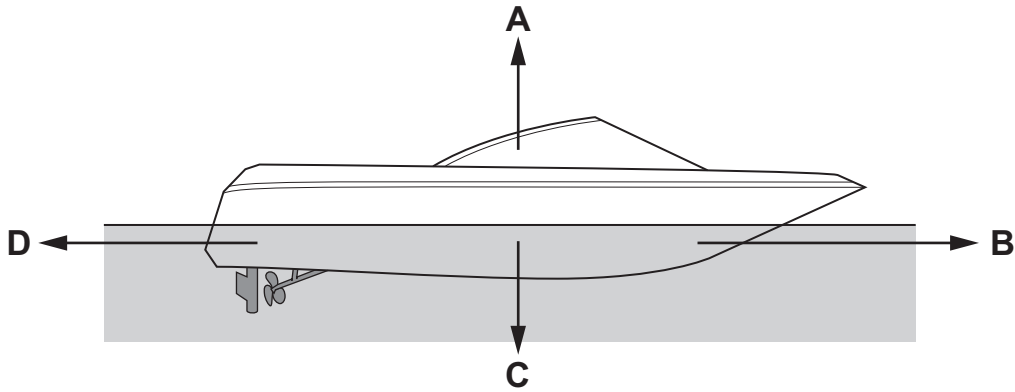
.....

movement

.....

[2]

3 The force diagram shows a boat floating on water.



The arrows **A**, **B**, **C** and **D** are forces on the boat.

(a) The boat does **not** move up or down on the water.

This is because there are equal forces.

Which are these equal forces?

Circle the correct answer.

A and B

A and C

B and D

B and C

[1]

(b) Which letter shows the force of water resistance?

Circle the correct answer.

A

B

C

D

[1]

(c) The boat is **not** moving.

Which force needs to increase to make the boat move forward?

Circle the correct answer.

air resistance

applied force

gravity

upthrust

[1]

4 The Earth is surrounded by a layer of air.

Air in some cities contains large amounts of carbon monoxide.

Carbon monoxide is a gas **not** normally found in the air.

(a) Write down the name of a gas normally found in the air.

..... [1]

(b) Complete the sentence.

Carbon monoxide is a type of air pollution because it is

..... [1]

(c) Suggest the name of something that makes carbon monoxide.

..... [1]

5 Tick (✓) each statement to show if it is about a magnet or about a magnetic substance.

statement	magnet	magnetic substance
attracts iron	<input type="checkbox"/>	<input type="checkbox"/>
is attracted by both a N pole and a S pole	<input type="checkbox"/>	<input type="checkbox"/>
has two poles	<input type="checkbox"/>	<input type="checkbox"/>
is repelled by a magnet	<input type="checkbox"/>	<input type="checkbox"/>

[2]

6 Look at the food label for vegetable burgers.

Nutrition Information		
amount in 100 g		amount in one burger
Fat	9.1 g	9.6 g
Carbohydrate	24.7 g	26.2 g
Fibre	5.6 g	5.9 g
Protein	4.2 g	4.5 g
Salt	0.78 g	0.83 g

(a) Oliver eats **two** vegetable burgers.

Calculate the amount of salt he eats.

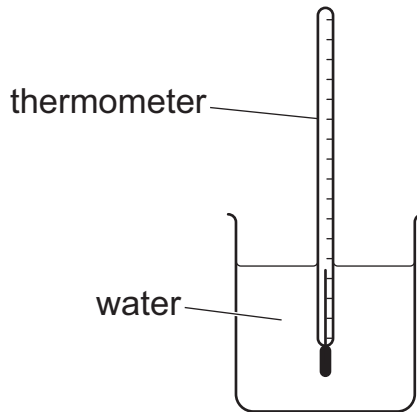
amount of salt in **two** vegetable burgers =g [1]

(b) Oliver eats vegetable burgers as part of his balanced diet.

Describe why Oliver eats a balanced diet.

.....
 [1]

7 Lily puts a thermometer in water.



(a) Write down the melting point and boiling point of water.

melting point °C

boiling point °C

[1]

(b) Lily heats the water until it is boiling.

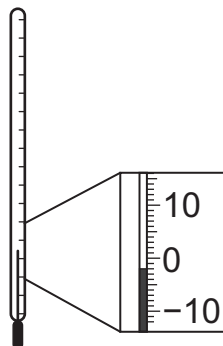
She measures the boiling point of water by looking at the thermometer.

Write down **one** way she makes sure she is safe when looking at the thermometer.

.....
..... [1]

(c) Lily adds salt to another beaker of water to make salty water.

Look at the reading on the thermometer in the salty water.



Complete the sentence.

The temperature of the salty water is °C

[1]

8 Different whales make different types of sounds.

Rajiv draws a table to show the lowest pitch and the highest pitch for different whales.

The lowest pitch a whale makes has a value of 1.

The highest pitch a whale makes has a value of 10.

whale	lowest pitch	highest pitch
beluga whale	4	10
blue whale	1	3
elephant whale	2	6
fin whale	2	3
grey whale	2	4

(a) Complete the sentence to describe how whales make sound.

Whales use muscles in their chest and throat to

make the air

[1]

(b) Rajiv sorts the whales into **two** groups by using their lowest and highest pitch.

Write the name of each whale in the correct group.

whales which only produce sound with pitches less than 5

whales which produce sound with pitches of 5 or more

[1]

(c) Pitch describes sound.

Volume also describes sound.

Which words best describe the **volume** of sound?

Circle the correct answer.

big and small

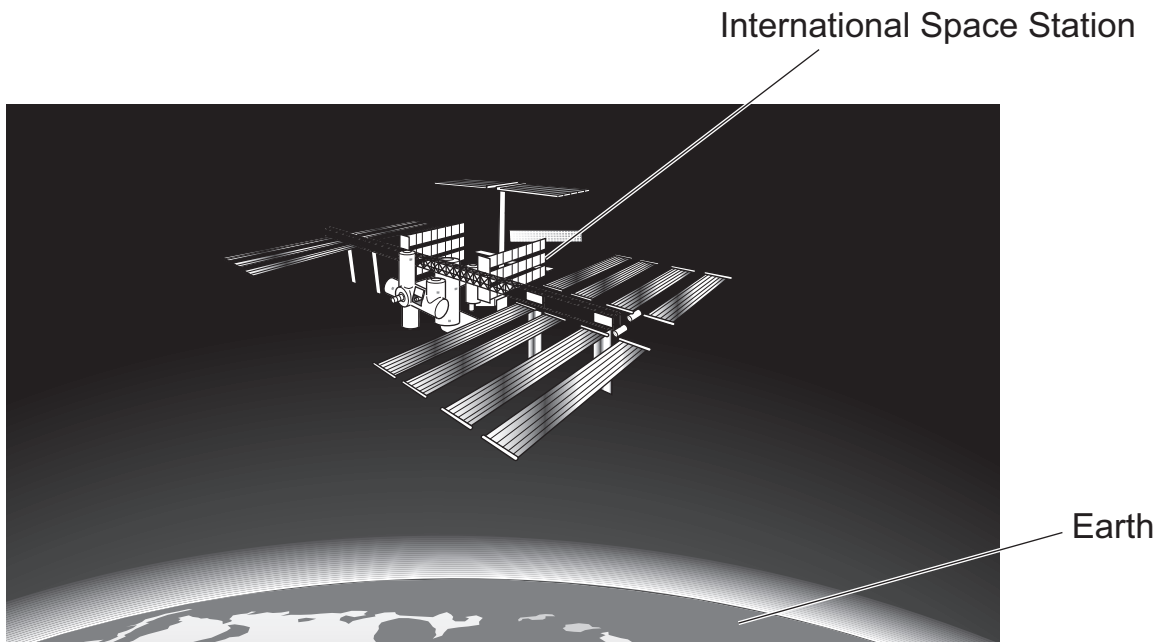
high and low

loud and quiet

up and down

[1]

9 Look at the picture of the International Space Station.



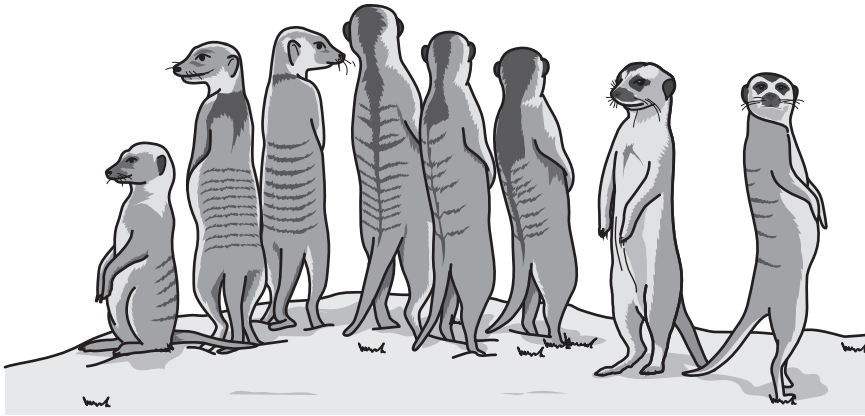
(a) Explain why the International Space Station is a satellite.

.....
..... [1]

(b) Write down the name of planet Earth's natural satellite.

..... [1]

10 Look at the picture of a group of meerkats.



Meerkats are the prey of large birds and snakes.

Meerkats are adapted to help them stay safe from predators.

(a) Complete the table to show how these adaptations help them stay safe.

adaptation	explanation
striped and light colour fur	<p>.....</p> <p>.....</p>
dark patches around their eyes to reduce the brightness of the sunlight	<p>.....</p> <p>.....</p>

[2]

(b) Describe why living in groups makes meerkats safer from predators.

.....

..... [1]

11 Carlos measures the time it takes for different substances to dissolve in water.

(a) He adds 5 g of a substance to warm water.

What does Carlos do to make all the substance dissolve in the warm water?

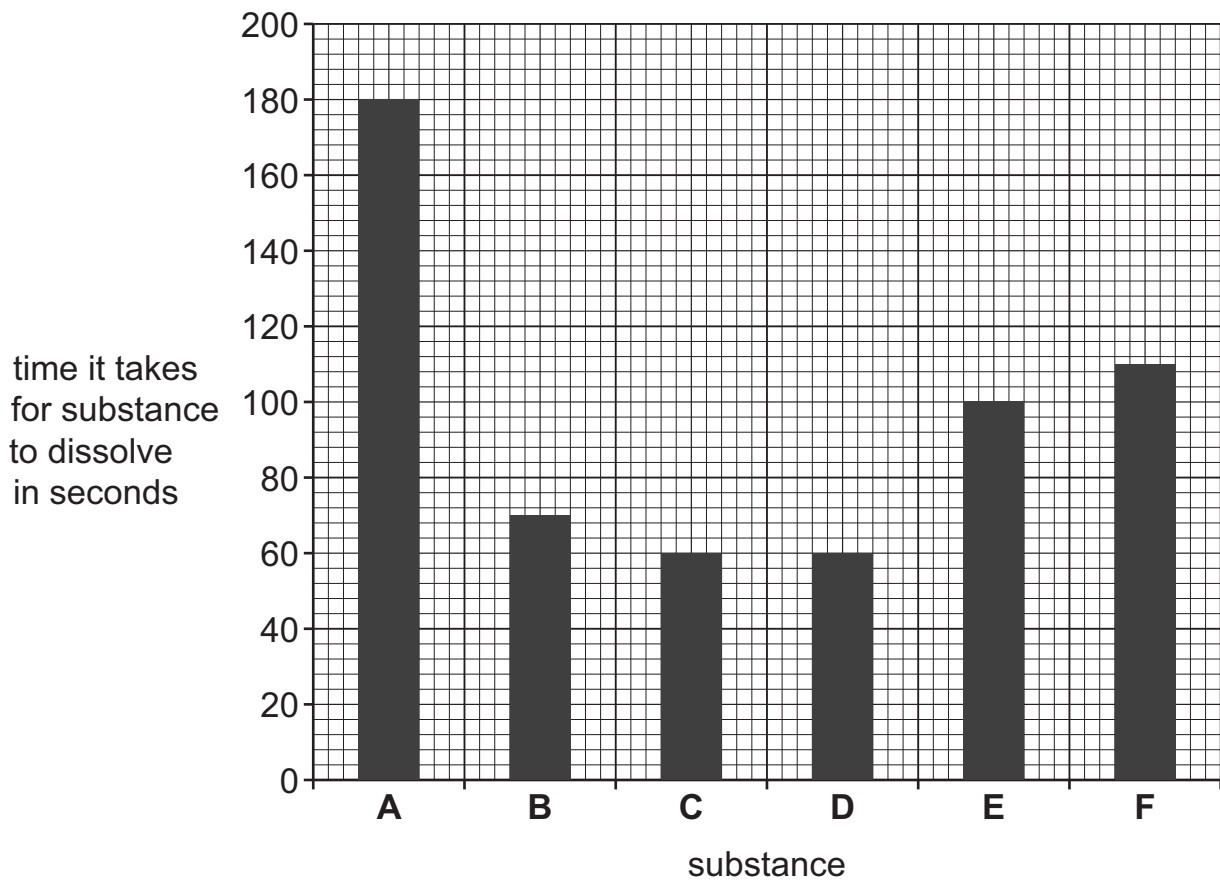
..... [1]

(b) Describe how Carlos knows all the substance has dissolved.

..... [1]

(c) Carlos repeats the experiment with different substances.

He draws a bar chart of his results.



Complete the sentences.

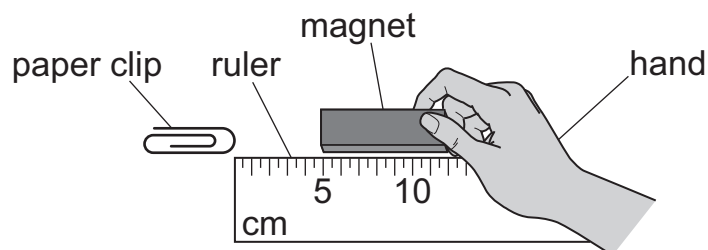
Substance **B** takes seconds to dissolve.

The two substances that take the same time to dissolve are and

[1]

12 Pierre wants to investigate the strength of a magnet.

Look at his equipment.



Pierre moves the magnet away from the paper clip.

(a) Which sentence is a prediction for this investigation?

Tick (✓) the correct answer.

As the distance increases fewer paper clips move.

As the distance increases the paper clip stops moving.

As the size of the paper clip increases the magnet is weaker.

As the size of the paper clip increases the magnet is stronger.

[1]

(b) Complete the sentence.

The paper clip moves towards the magnet because there is a
between them.

[1]

13 Jamila investigates part of the water cycle.

She collects the precipitation outside her home.

(a) Precipitation may be snow, ice crystals, sleet or hail.

Write down **one other** type of precipitation.

..... [1]

(b) Write down the name of the equipment Jamila uses to accurately measure the amount of precipitation in ml.

..... [1]

(c) Jamila measures the precipitation each week for two weeks.

She writes her results in a table.

week	amount of precipitation in ml
1	5
2	4

Jamila does **not** think there is a pattern in her results.

Write down **two** different ways she improves her investigation to learn if there is a pattern.

1

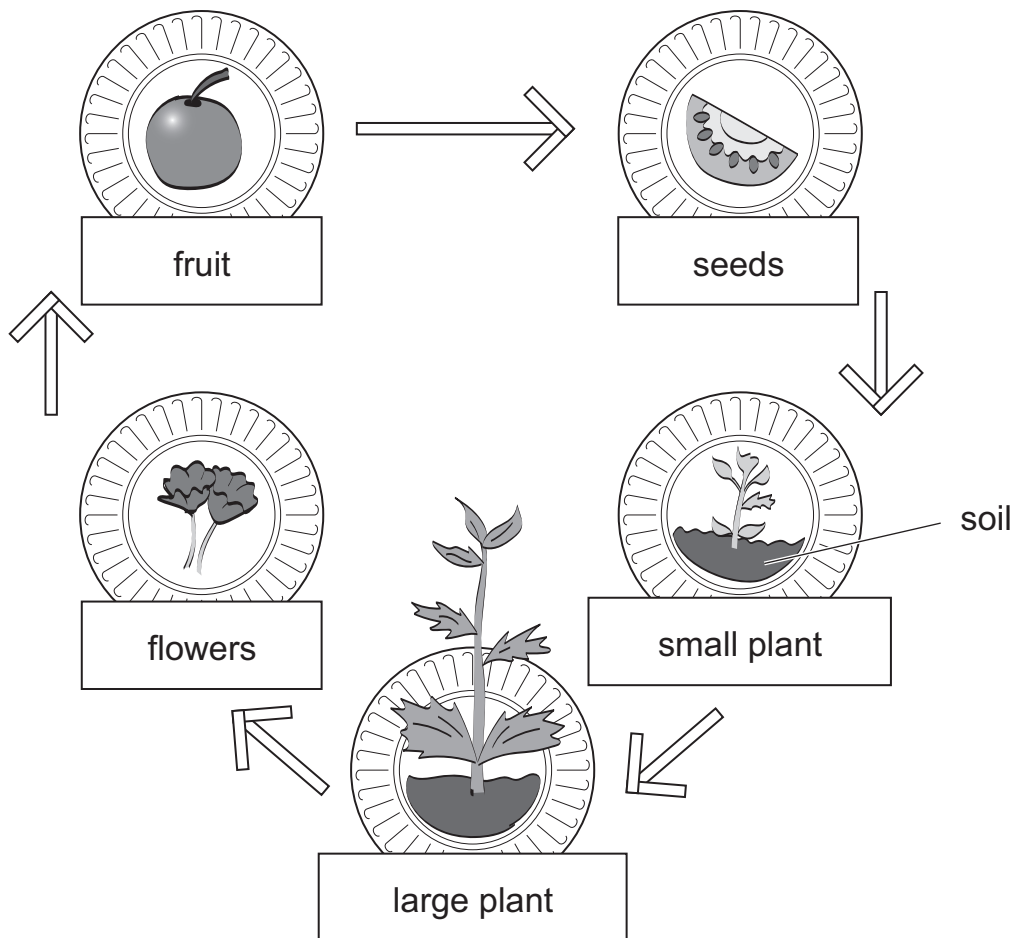
.....

2

.....

[2]

14 Angelique makes a cardboard model to show the life cycle of a tomato.



(a) Why has Angelique made a model of the life cycle of a tomato?

Circle the correct answer.

there are no photographs of tomato plants

most of the life cycle takes place under the ground

the life cycle of the tomato is too fast to see

to show the main parts of the life cycle

[1]

(b) The seeds in the tomato are eaten by birds.

The birds drop the seeds on to the soil.

Write down the name of the process that moves seeds from the tomato to the soil.

..... [1]

BLANK PAGE

Permission to reproduce items where third-party owned material protected by copyright is included has been sought and cleared where possible. Every reasonable effort has been made by the publisher (UCLES) to trace copyright holders, but if any items requiring clearance have unwittingly been included, the publisher will be pleased to make amends at the earliest possible opportunity.

To avoid the issue of disclosure of answer-related information to candidates, all copyright acknowledgements are reproduced online in the Cambridge Assessment International Education Copyright Acknowledgements Booklet. This is produced annually and is available to download at <https://primary.cambridgeinternational.org/>

Cambridge Assessment International Education is part of Cambridge Assessment. Cambridge Assessment is the brand name of the University of Cambridge Local Examinations Syndicate (UCLES), which is a department of the University of Cambridge.