



Science

Stage 3

Paper 1

2024

Cambridge Primary Progression Test

Name

Class

Date

30 minutes

No additional materials are needed.

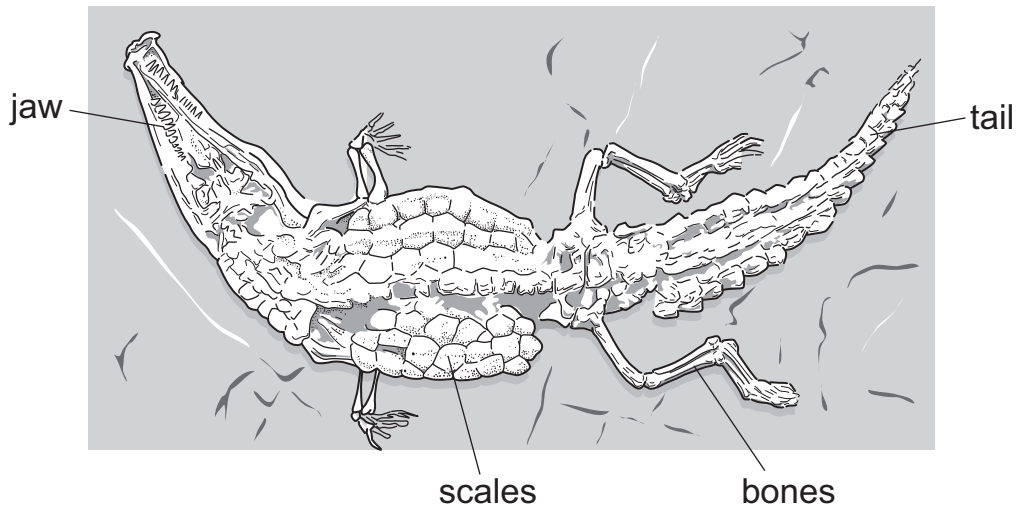
INSTRUCTIONS

- Answer **all** questions.
- Write your answer to each question in the space provided.
- You should show all your working on the question paper.

INFORMATION

- The total mark for this paper is 30.
- The number of marks for each question or part question is shown in brackets [].

1 (a) The picture shows the remains of an animal that lived millions of years ago.



Write down the word that describes these remains of a dead animal.

..... [1]

(b) The animal is a reptile.

Circle the feature that shows the animal is a reptile.

bones

jaw

scales

tail

[1]

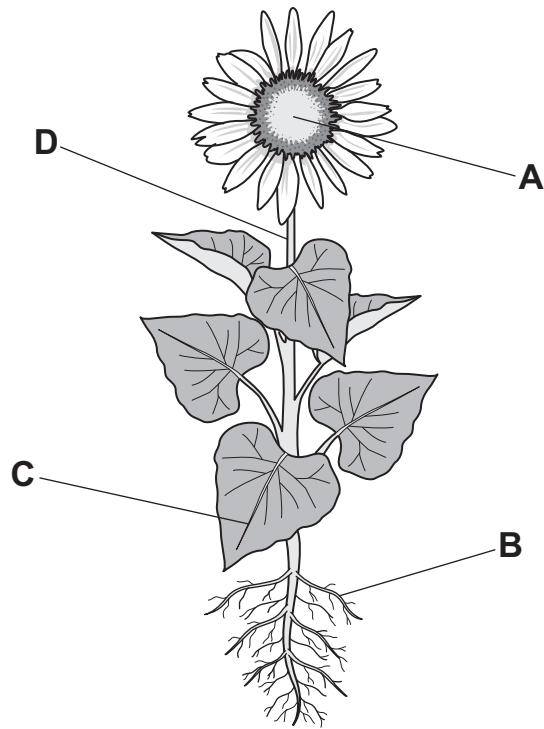
(c) Write down the names of **two** useful materials found in rocks.

1

2

[2]

2 (a) The picture shows a plant.



Draw a straight line from each **labelled part** to its **function**.

labelled part

A

B

C

D

function

makes food

makes seeds

takes in water

transports water

[2]

(b) Plants need water to be healthy.

Write down **two other** conditions plants need to be healthy.

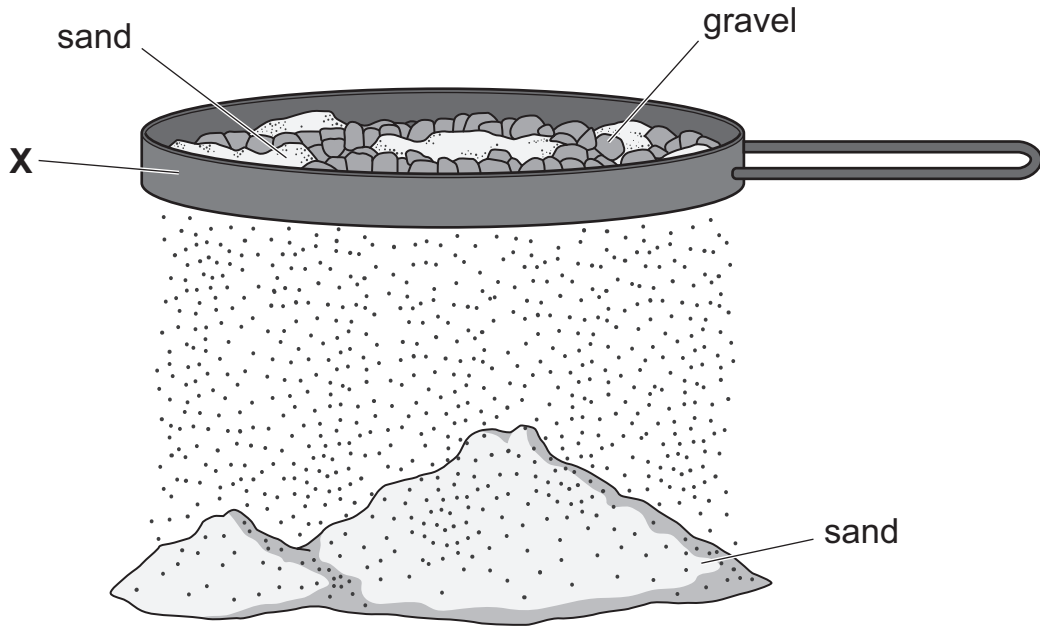
1

2

[2]

3 Oliver separates a mixture of sand and gravel.

The diagram shows the equipment he uses.



(a) Circle the name of the piece of equipment labelled X.

evaporating dish

filter funnel

sieve

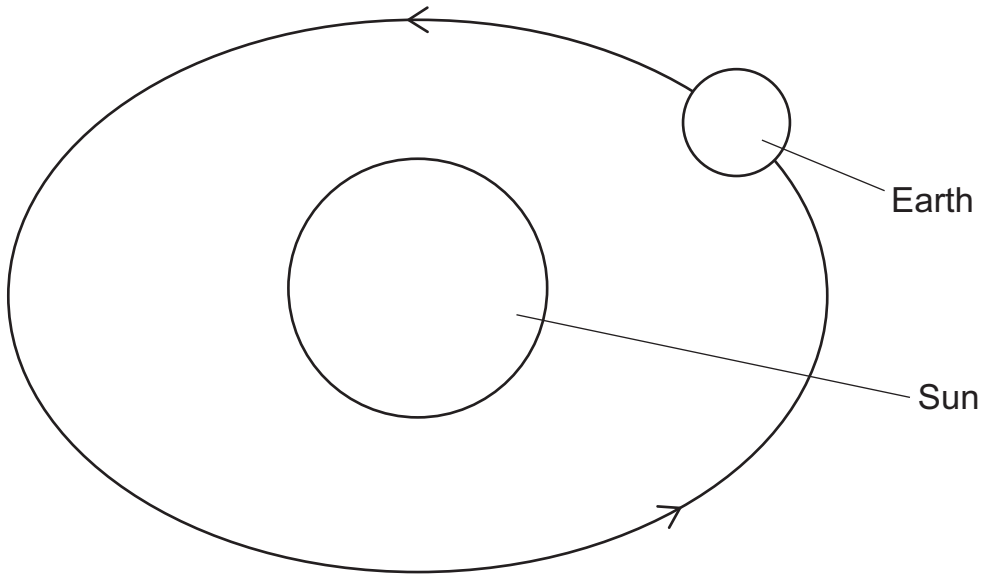
thermometer

[1]

(b) Explain why **only** the sand passes through the piece of equipment labelled X.

.....
..... [2]

4 Carlos draws a diagram to show the relative movement of the Earth around the Sun.



Not drawn to scale

(a) Complete his drawing to show the relative movement of the Moon.

[1]

(b) Circle the word that **best** describes the shape of the Earth.

prism **cylinder** **polygon** **sphere**

[1]

(c) Which force pulls towards the centre of the Earth?

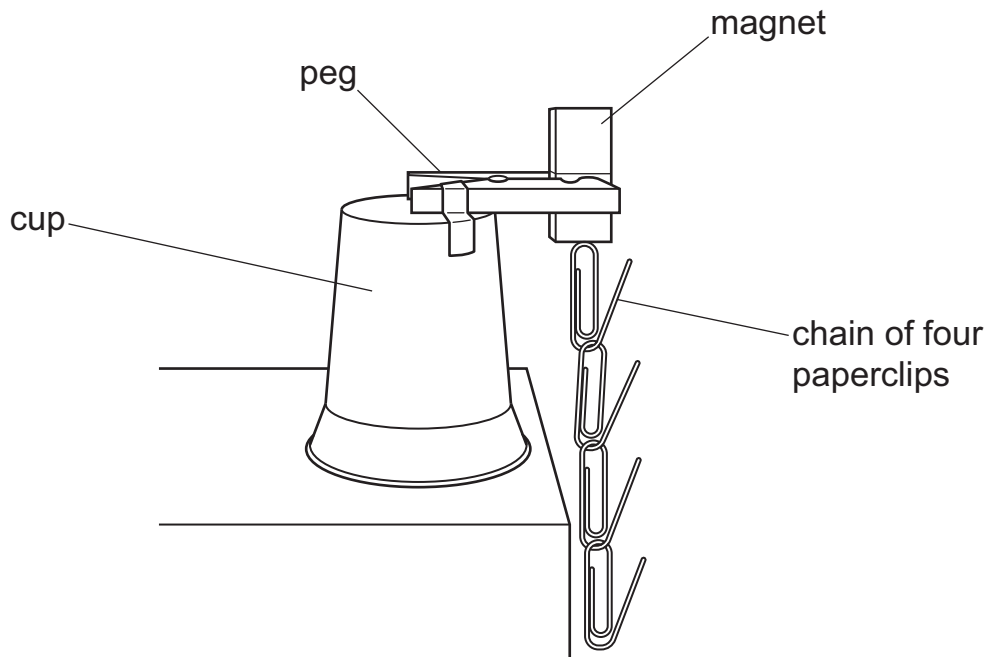
..... [1]

(d) Name the equipment used to measure forces.

..... [1]

5 Blessy investigates the strength of five different magnets.

The diagram shows the equipment she uses.



Blessy makes chains using different numbers of paperclips.

Blessy writes down the number of paperclips in the longest chain each magnet attracts.

Here are the results.

magnet	number of paperclips in the longest chain
A	4
B	6
C	8
D	7
E	2

(a) Which magnet attracts the most paperclips?

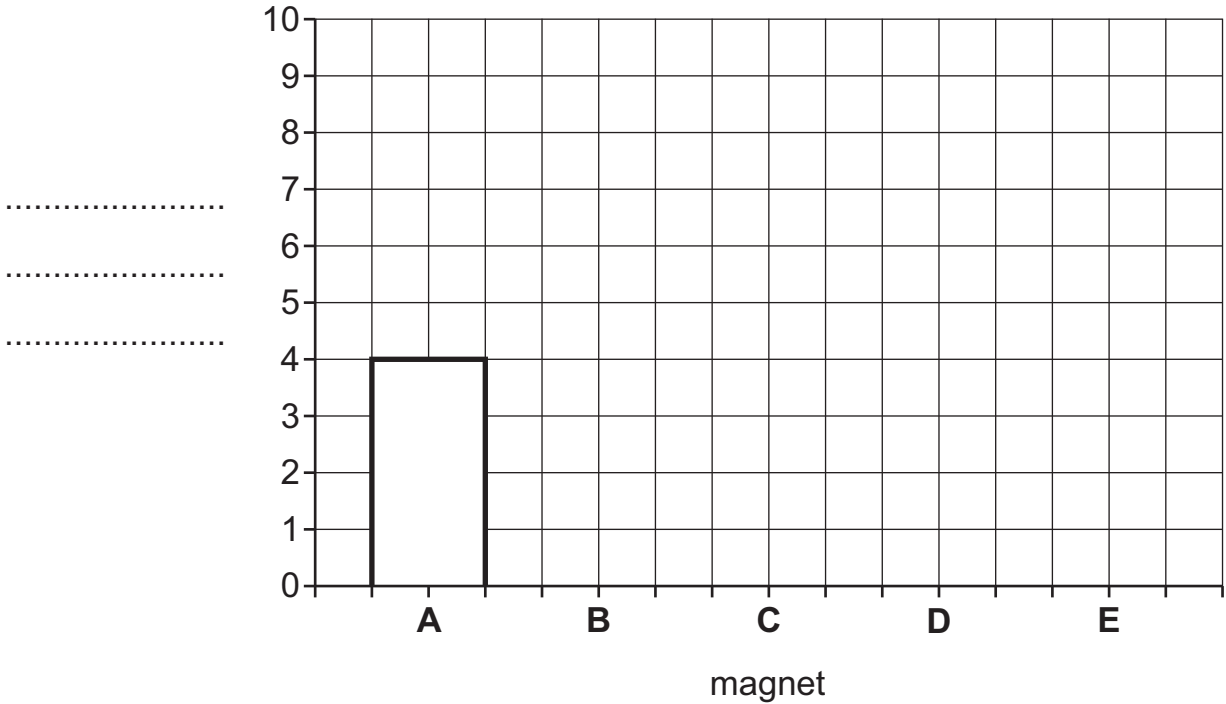
Choose the correct letter.

.....

[1]

(b) Complete the bar chart of her results.

One bar has been done for you.



[2]

(c) Complete the sentence about magnets.

Magnets have north and south ends called [1]

(d) Complete the sentence about magnets.

When the north end of a magnet is put next to the north end of another magnet the magnets each other. [1]

(e) Blessy says,

'Using identical paperclips is a feature of one type of scientific enquiry.'

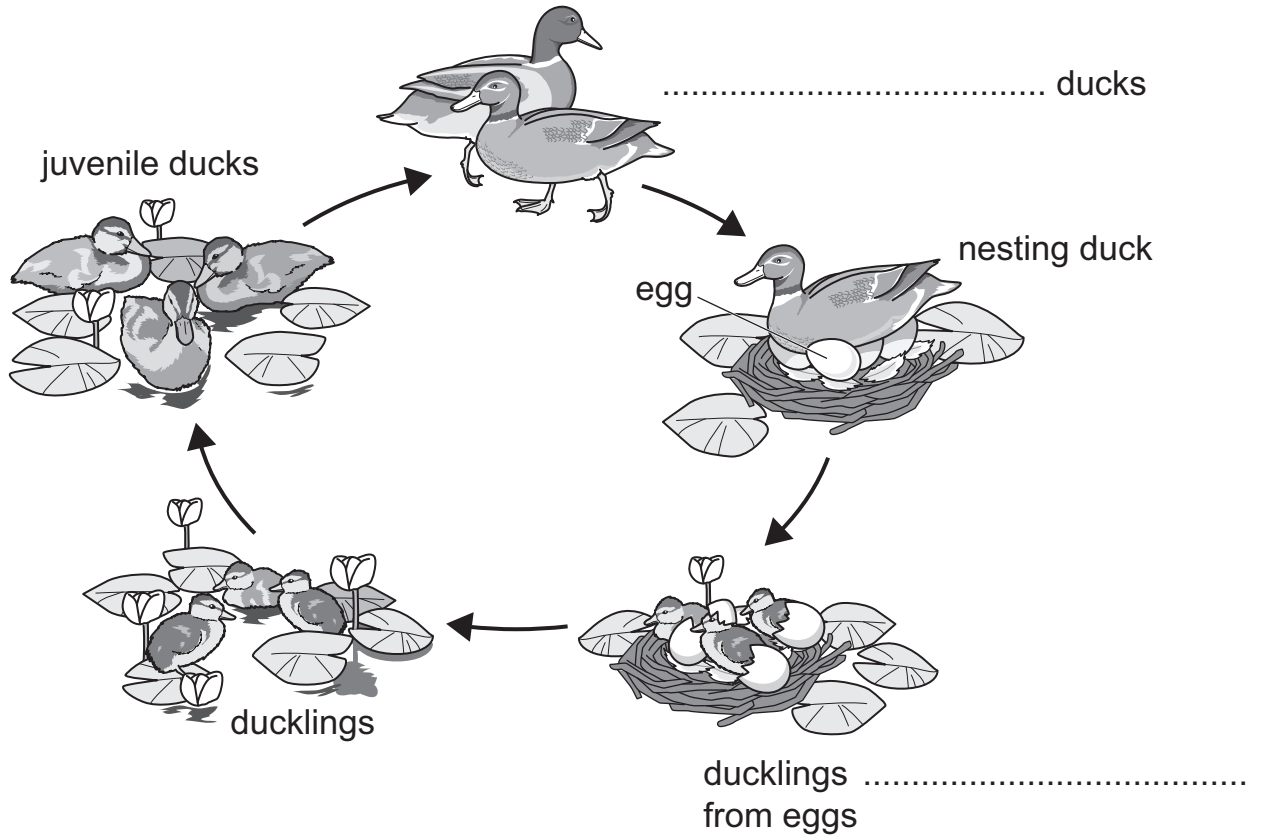
Which type of scientific enquiry?

Circle the correct answer.

classifying fair testing observing research [1]

6 Birds such as ducks have a life cycle.

(a) Complete the life cycle of the ducks.



[2]

(b) Some insects have caterpillars as part of their life cycle.

Which type of insect has a caterpillar as part of their life cycle?

..... [1]

7 The table shows some information about different materials.

material	solid, liquid or gas at room temperature	light passes through the object	soluble in water
A	solid	no	yes
B	solid	no	no
C	liquid	yes	yes
D	gas	yes	yes
E	liquid	no	no

(a) Which material is a solid and dissolves in water?

Circle the correct answer.

A B C D E [1]

(b) Circle **all** the materials that keep their shape and do **not** flow.

A B C D E [1]

(c) Circle **all** the materials that are transparent.

A B C D E [1]

(d) Materials are used to make mixtures.

What is a mixture?

.....
 [1]

8 Lily rides a sleigh down a hill covered in snow.



Lily makes the runners of her sleigh smoother.

Complete the sentences to explain how the speed of the sleigh changes.

The speed of the sleigh will

This is because

[2]

Permission to reproduce items where third-party owned material protected by copyright is included has been sought and cleared where possible. Every reasonable effort has been made by the publisher (UCLES) to trace copyright holders, but if any items requiring clearance have unwittingly been included, the publisher will be pleased to make amends at the earliest possible opportunity.

To avoid the issue of disclosure of answer-related information to candidates, all copyright acknowledgements are reproduced online in the Cambridge Assessment International Education Copyright Acknowledgements Booklet. This is produced annually and is available to download at <https://primary.cambridgeinternational.org/>

Cambridge Assessment International Education is part of Cambridge Assessment. Cambridge Assessment is the brand name of the University of Cambridge Local Examinations Syndicate (UCLES), which is a department of the University of Cambridge.